

The RHS Lean To's – Specification

Approximate measurement: 7ft 7" x 11ft 8"

Cedar

The framework and cladding is in a top grade Western Red Cedar which is grown on the Western Sea Board of North America. It has long been used in inclement climates in the construction and garden industries due to its longevity (the timber contains natural preservatives), stability (it does not easily warp or bend being straight grained) and strength. All of our cedar is sourced from certified or sustainable forests.

Cedar absorbs moisture readily which brings the natural preservatives to the surface, it does however give off absorbed moisture rapidly in its natural state, which causes no harm and is a natural process. There is a wide colour variation in the raw material, it mellows to a silver grey as exposed to weathering.

Glass

All our structures are glazed in Tempered Safety Glass to British Standard BS.6206

Fixings

These are a combination of solid brass and stainless steel, both being suitable for use with Western Red Cedar due to their resistance to corrosion by the timber itself and extreme weather conditions.

Aluminium

We use powder coated aluminium to provide improved weather protection, ventilation and long lasting strong rainwater goods.

The gutters and downspouts are solid aluminium providing compatibility with proprietary rainwater systems and so may be used to link with rainwater saving tanks and butts.

The cedar roof spars are protected on the exterior by cappings with neoprene gaskets securing the glass and ensuring weatherproofing.

All products have an aluminium plinth on which the structures sit, this raises the timber off the ground protecting from rising moisture and giving a stronger fixing into the foundation.

All Greenhouses have our unique automated ventilated ridge using heat sensitive openers.

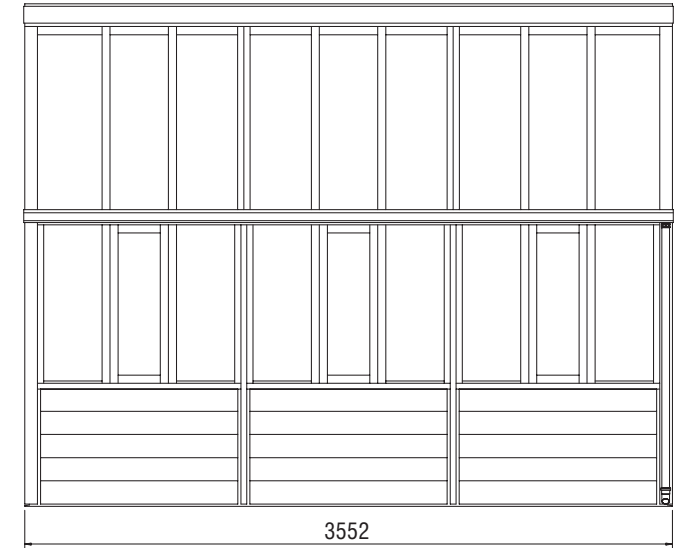
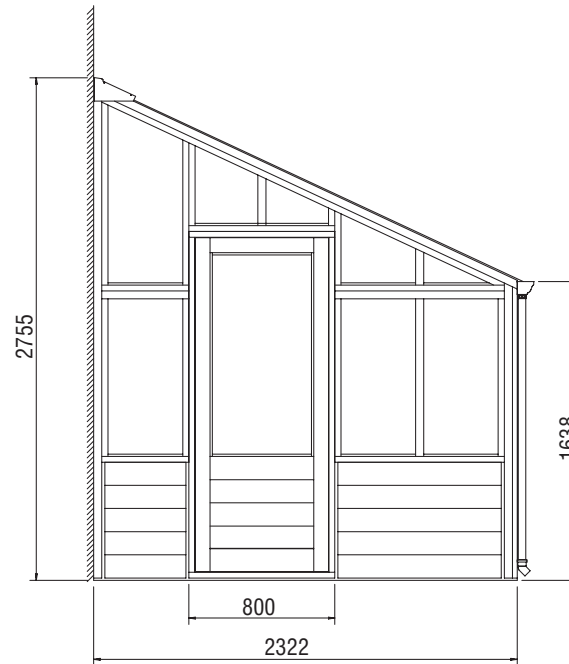
The ridge runs the entire length of the structure providing a favourable ventilation pattern in normal growing conditions.

Optional Extras

Sash windows (over and above those shown on side elevation plans). Cedar staging and shelving to either or both sides. You may choose to construct a dwarf wall for your greenhouse to replace the cedar boarding for which we provide plans. Roller blinds, these internal blinds reduce glare and lower summer temperatures. Manual ridge ventilation may be substituted for automated openers.

The downpipe and door position should be specified at point of order at which time you will be sent a detailed plan for preparing the base and installing the flashing.

For further information call **01829 271 888** or view online at www.gabrielash.com



Base Dimensions: 2302 x 3510mm